

Manage your fill plant operations conveniently with TIMS *Plant* using smartphones or tablets. Wherever you need to be: from tagging new cylinder assets, verifying and updating barcoded cylinder information, to cylinder filling and location transfers from your plant, yard, or dock.

Real-time reporting capabilities enable smarter business decisions: what should be filled, why, and when, and what to transfer to another branch.

Attach Tags —

whether distributor, vendor, or customer owned

Fill —

Tagged/Untagged cylinders, fill and transition your cylinders to a full status

Transition —

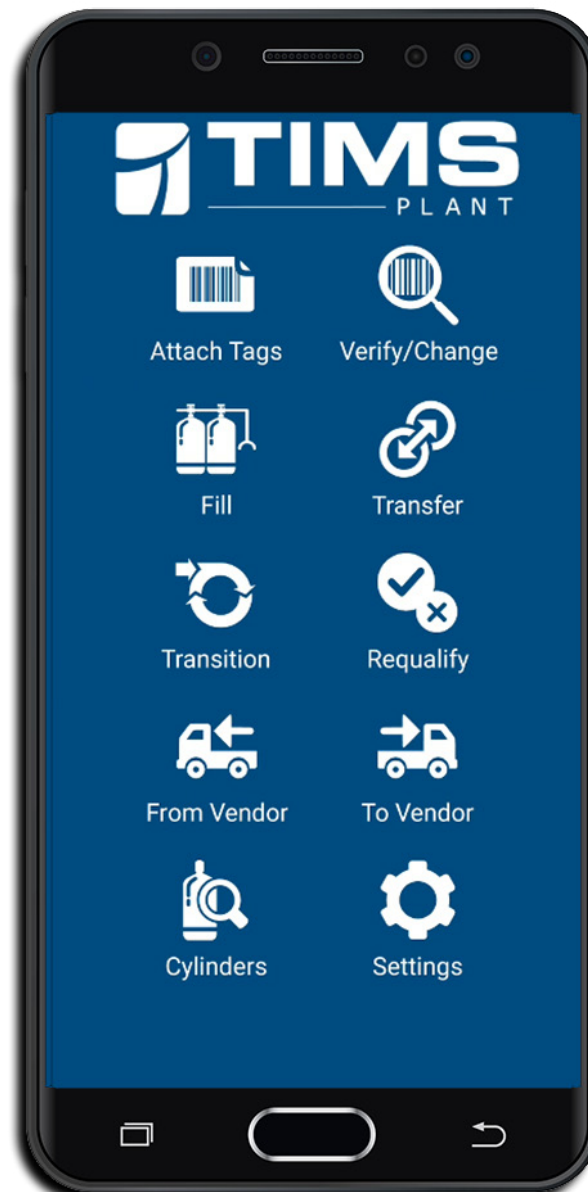
scan cylinders to a desired location and workflow state

From Vendor —

scan filled cylinders received from vendor

Cylinders —

scan/enter a tracked cylinder ID to inquire on its current or historical information



Verify/Change —

verify or update the contents of a cylinder

Transfers —

make transfers between locations and/or vendors

Requalify Cylinders —

ensuring they are legally acceptable for continued use

To Vendor —

scan cylinders you are sending to a vendor to be filled

Settings —

displays signed-in username, choose alternate scanning device and preference for geocoding cylinder activity

TIMS Plant provides real-time management of your cylinder assets:

- | Fly out menu provides options to quickly access more information without leaving current screen.
- | Look up and find cylinders by scanning barcode number or entering item number.
- | Use Untagged mode to enter gas item quantities filled or received from vendor.
- | Use Tagged mode to enter gas item information, quantity and attach tags.
- | View vital TIMS reports; detailed cylinder history, cylinder states, when states have changed, and cylinder error reports, to plan cylinder fills or branch transfers accordingly.

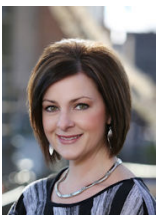
TIMS *Advanced Cylinder Management*

Tagging cylinders is a function of TIMS *Advanced Cylinder Management (ACM)*. ACM provides strategic management insight into exact cylinder locations, which gases to fill based on demand, auditing cylinder status and changes, cylinder errors, workflow, and cylinder states. If you're looking to enhance customer service and gain better asset utilization, ACM can help your business.

Requirements: Android® or iOS®, current OS minus -1, cellular connectivity and/or wireless access to TIMS core is needed. TIMS 7 and above required.

"When I saw TIMS Plant in action, I knew it was the right time for us to grab this application-based technology to take our company to the next level. It's more powerful today and is far less costly. There's a clear screen, it's very intuitive and user-friendly and walks you through every step. It's a simple process."

Linda Fette, VP, Helget Gas Products



Tracie Hunt
Systems Consultant
406.255.9615
TRACIE@CU.NET



Kristine Weber
Systems Support Consultant
406.869.9737
KRISTINEE@CU.NET



Frank Haskett
Sales Representative
406.255.9506
FRANKH@CU.NET

S I M P L E | E F F E C T I V E | M A N A G E A B L E | M O B I L E