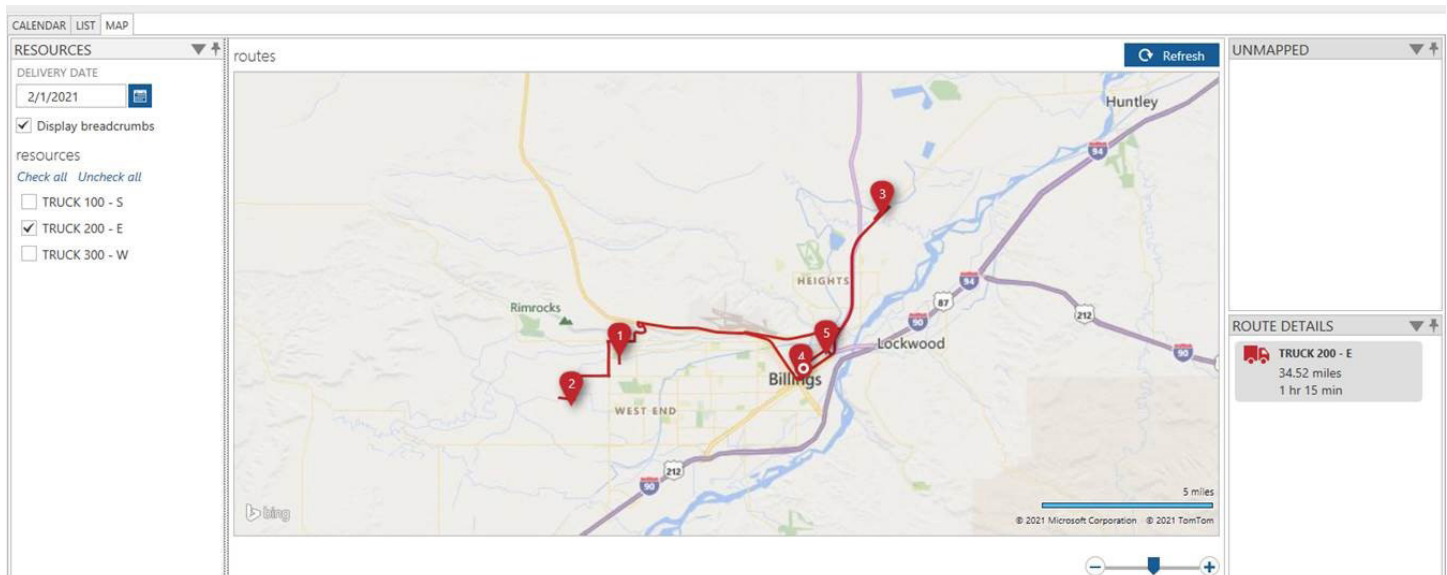


**Keep your drivers and your customers connected by transforming your distribution processes. Using planned scheduling & routing, TIMS Scheduler helps you eliminate unnecessary delivery costs.**

## Scheduling & Logistics

- | Create efficient and optimized routes for deliveries.
- | Answer customer delivery status inquiries with real-time delivery updates.
- | Add to delivery schedule, re-route deliveries, even schedule in milk-runs.
- | Use Delivery Activities to assign delivery times to specific products.



## Insights

- | View by Calendar, List, & Map.
- | Zoom in and out on routes to view full stop details.
- | View Calendar by day or by week.
- | See all stops for single or multiple trucks.
- | See where a driver has been and where they are now, in real-time.
- | Separate orders for routing based on ship via/branch or products.

Orders can be assigned to a route individually or select and assign multiple orders at one time.

The screenshot shows the TIMS Scheduler interface. On the left, under 'UNSCHEDULED', there is a list of orders with details like customer name, address, and order number. On the right, a calendar view shows three trucks (truck 1, truck 2, truck 3) for the date 01 Wednesday. A modal window titled 'schedule orders' is open, showing 'Orders 4 selected order(s)'. It has a 'RESOURCE' dropdown set to 'truck 1', an 'APPOINTMENT' date set to '7/1/2020', and a time set to '4:00 AM'. There are 'Schedule orders' and 'Cancel' buttons. Below the calendar, there is an 'ORDER DETAILS' section with fields for Customer, Name, Order, Order date, Entered by, Called in by, Purchase order, Gas purchase order, Release, Origination branch, Destination branch, Ship date, Ship complete, Delivery status, Total weight, Total area, and Total # of cylinder.

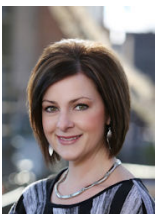
The 'TRUCK DETAILS' window shows a table of items on a truck. The table has columns for ITEM, DESCRIPTION, AREA, ORDER QUANTITY, TRUCK STOCK QUANTITY, and TOTAL QUANTITY. The data is as follows:

ITEM	DESCRIPTION	AREA	ORDER QUANTITY	TRUCK STOCK QUANTITY	TOTAL QUANTITY
CU HARDGOOD 1	HARDGOOD ITEM	1000	0	6	6
CU RENTAL 1	RENTAL ITEM	1000	0	2	2
COPY E	OXYGEN CONTE	3000	0	5	5

*Truck Details* display items on individual trucks for committed orders and any base truck stock or 'par levels' defined for the truck. You can also view valuable truck information such as weight and area to keep your trucks running as efficiently as possible.

## Scheduler Reports:

- | **Truck Manifest Report** — shows the contents of a particular truck.
- | **Delivery Trip Report** — route information broken up by stop.
- | **Truck Load Sheet** — includes a list of all items on all orders for a specific day/specific truck.
- | **Delivery Performance Report** — see how long drivers are at a particular stop, total deliveries made, what was delivered, and how long it took to process the order.



**Tracie Hunt**  
Systems Consultant  
406.255.9615  
TRACIE@CU.NET



**Kristine Weber**  
Systems Support Consultant  
406.869.9737  
KRISTINEE@CU.NET



**Frank Haskett**  
Sales Representative  
406.255.9506  
FRANKH@CU.NET

Product Specifications: Available in TIMS 7 and above.